

Experiences from Early Adopters in EOSC RELIANCE Open challenge for Sustainable Development

Tourism Overnight-stays in Venice Pre and Post Covid19

6th December 2022 – online

<https://webinar22.eoscfuture.eu/registration/>

Tourism Overnight-stays in Venice Pre and Post Covid19

**DARIO BERTOCCHI &
LISA ZECCHIN
UNIVERSITY OF UDINE
& CA' FOSCARI
UNIVERSITY OF
VENICE**

dario.bertocchi@uniud.it



Main activities carried out with the RELIANCE Services

- We used the RoHub service to create a data base centric Ros (Research Objects) to share the tourism database with the community
 - We linked the information with other ROs to start verify a correlation between tourism - waste production and pollution levels
- Easy to update with data regarding 2022 or from other geographical level (e.g. from the entire municipality down to more specific locations)
- Creation of a specific thematic group regarding tourism and sustainable tourism

Main activities carried out with the RELIANCE Services

PUBLIC MANUAL LIVE DATA-CENTRIC RESEARCH OBJECT MARINE LITTER AND PLASTICS POLLUTION DATASET

Created 22 November 2022 (20:08)

Resources 2



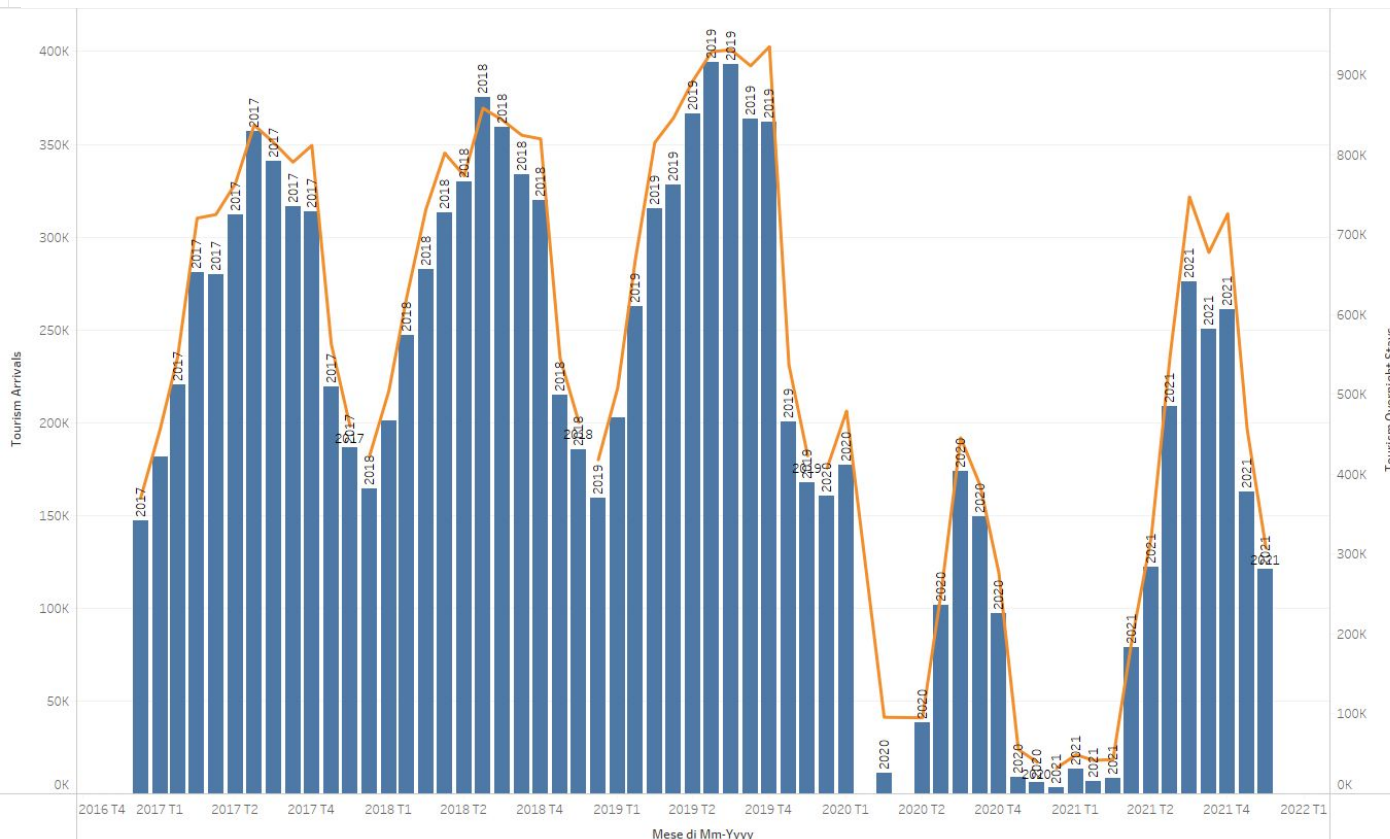
Completeness

APPLIED SCIENCES, CULTURAL GEOGRAPHY, REGIONAL GEOGRAPHY, SOCIAL SCIENCES

Tourism Overnight-stays in Venice Pre and Post Covid19

Dario Bertocchi, Lisa ZECCHIN

This dataset represents the monthly level of tourism arrivals and overnight-stays in Venice city centre, Italy.



Measure Names
■ Tourism Arrivals
■ Tourism Overnight Stays

Main activities carried out with the RELIANCE Services

PUBLIC MANUAL LIVE DATA-CENTRIC RESEARCH OBJECT MARINE LITTER AND PLASTICS POLLUTION DATASET

Created 22 November 2022 (20:08)

APPLIED SCIENCES, CULTURAL GEOGRAPHY, REGIONAL GEOGRAPHY, SOCIAL SCIENCES

Tourism Overnight-stays in Venice Pre and Post Covid19

Dario Bertocchi, Lisa ZECCHIN

This dataset represents the monthly level of tourism arrivals and overnight-stays in Venice city centre, Italy.

Resources 2



	2017	2018	2019	2020	2021
TOURISM ARRIVALS	3155548	3325283	3515233	923304	1512991
TOURISM OVERNIGHT STAYS	7862292	8213116	8817623	2534368	4142444
VAR % YYOYY		4%	7,30%	-71%	63%
VAR % 2019-2021	-53%				

RESEARCH OUTCOMES



- Study the effect of tourism sector on environment
- Identify a correct number of visitors to maintain the environmental sustainability level (in a context of a tourism carrying capacity)
- Give indications on a sustainable charge/price to include inside the visitor fee for day-trippers and tourism tax for tourists

FINAL CONSIDERATIONS AND REMARKS

EOSC-RELIANCE is a useful digital tool for:

- Find interesting datasets
- Find already applied analysis and algorithm
- Virtually meet researchers and colleagues to open new research lines
- Is an academic/research “git-hub”
- Perfect environment to upload different European project outcomes in terms of data, figures and tools

Thank you for your attention!

Dario Bertocchi
University of Udine
dario.bertocchi@uniud.it