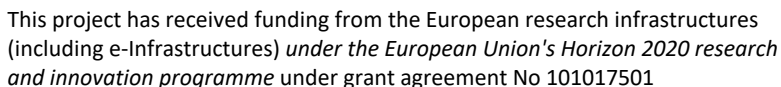
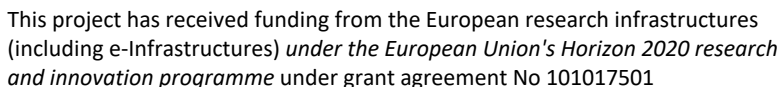




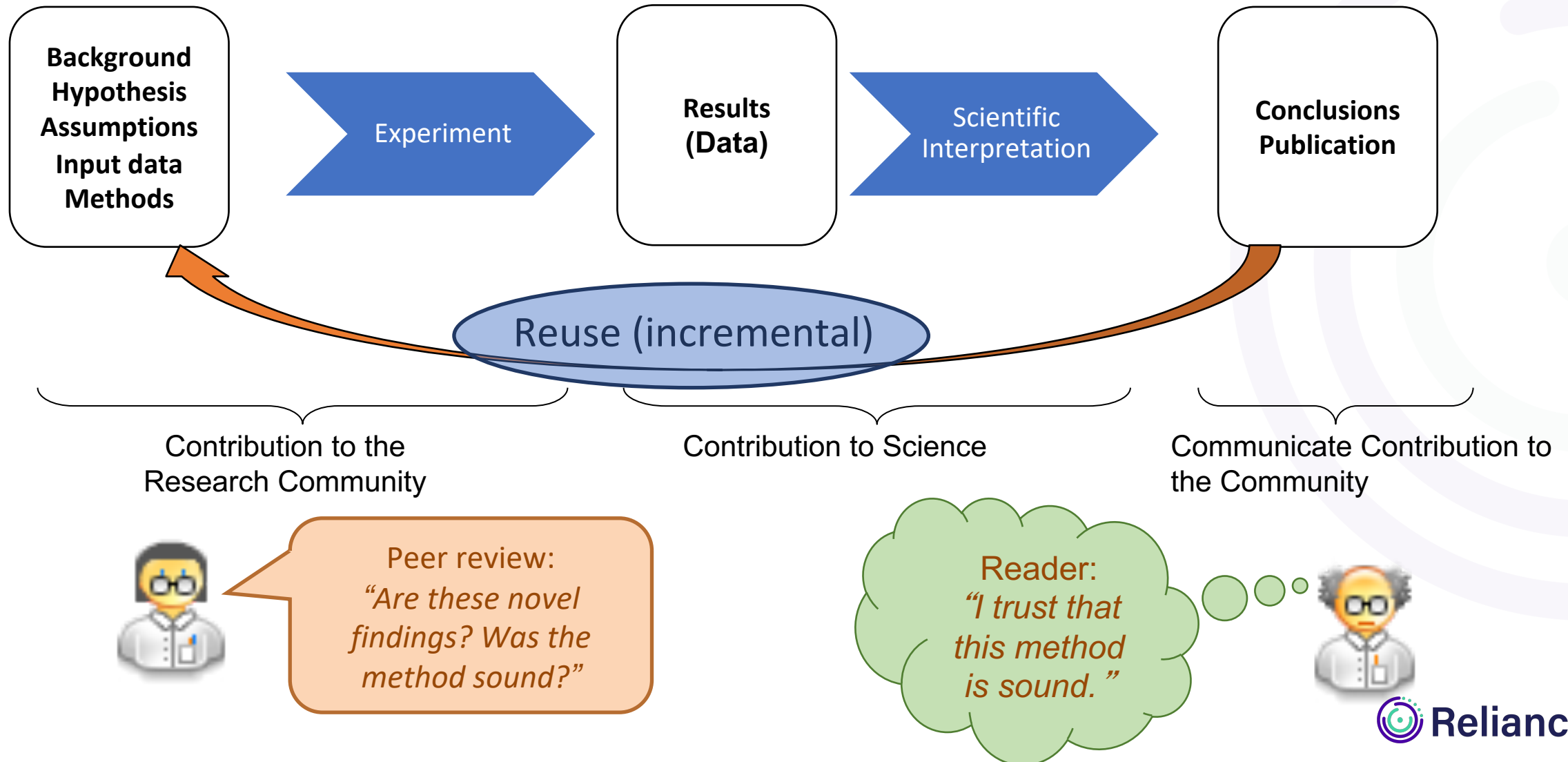
Interdisciplinary research in Earth Science

6th December 2022

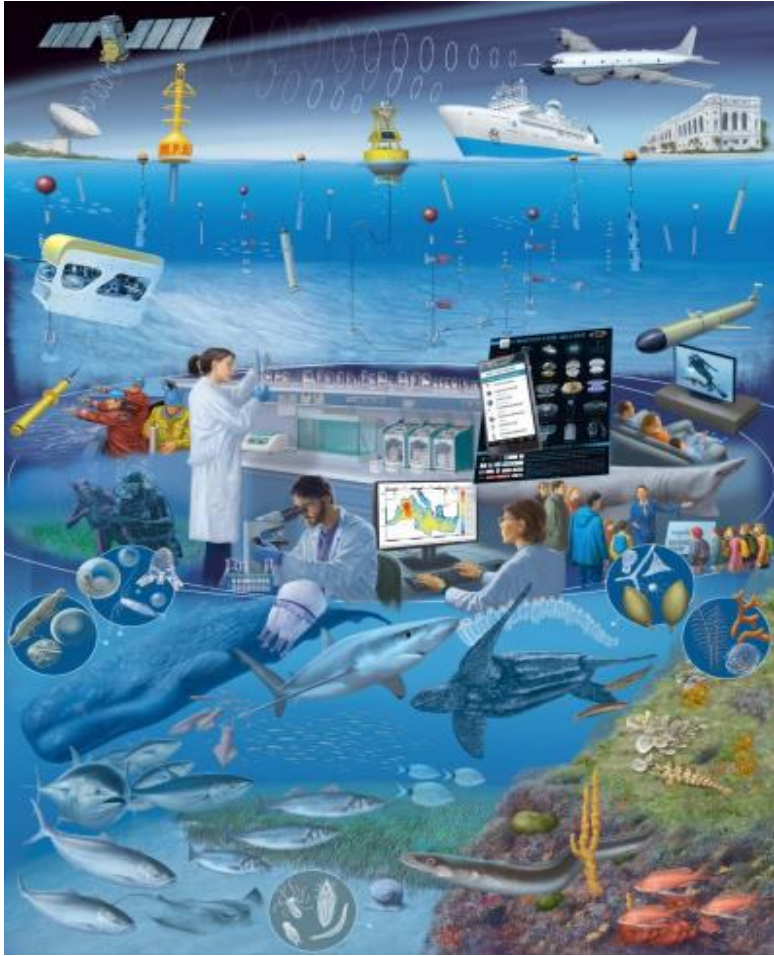
Webinar: Pan-European digital assets supporting research communities: benefits and opportunities



The Research Lifecycle: high-level overview

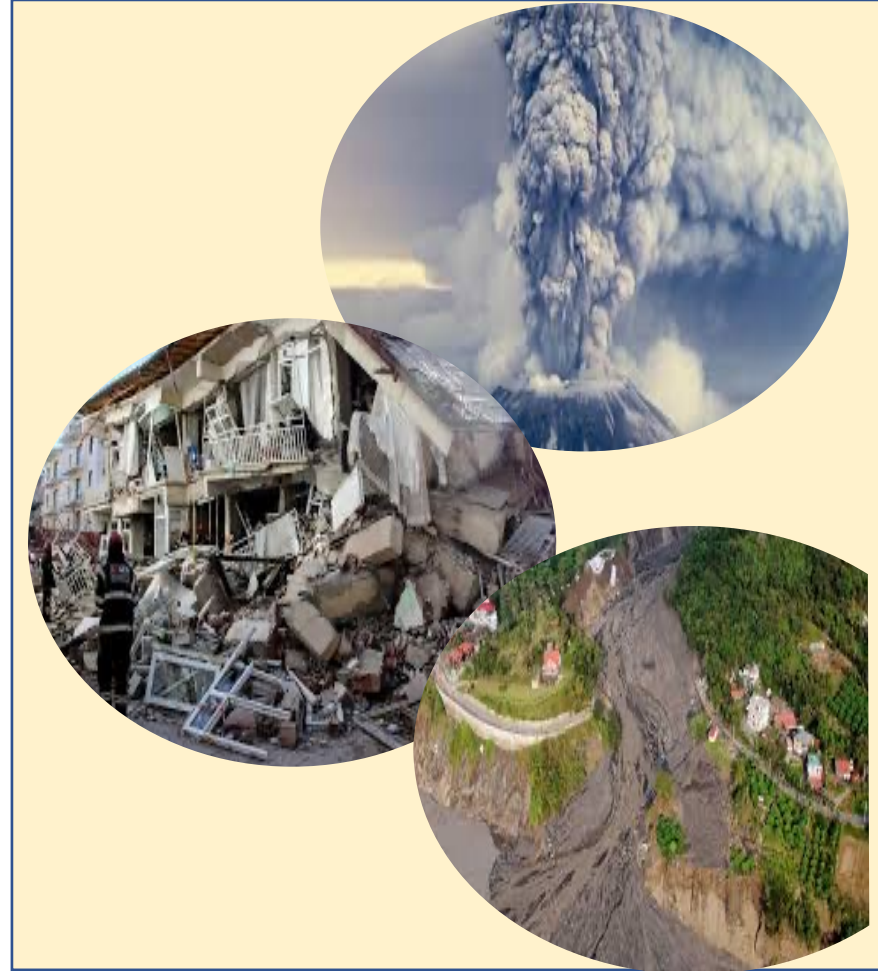


Sea Monitoring



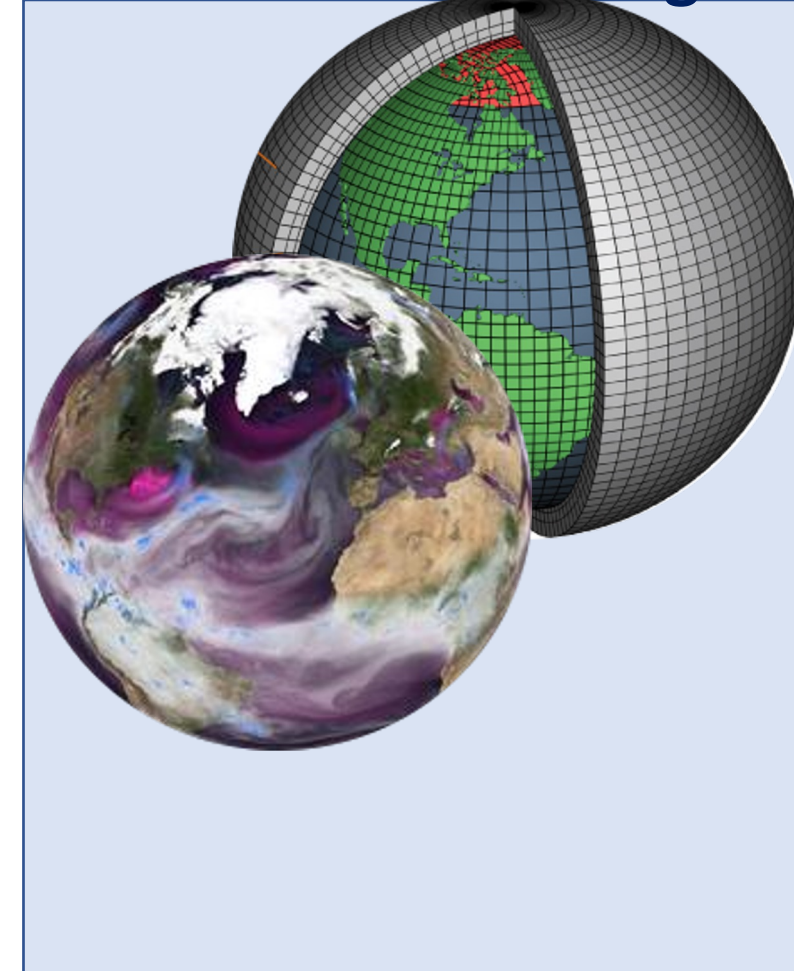
Marine scientists studying the marine habitats, the present and past dynamics of the ocean and the interface between ocean and atmosphere

Geohazard



Geohazard scientists aiming at improving scientific knowledge of volcanic and seismic Supersites to support Disaster Risk Reduction.

Atmospheric and climate modelling



Atmospheric scientists working on the development of numerical meteorological , ocean and climate models.

Sea Monitoring Community

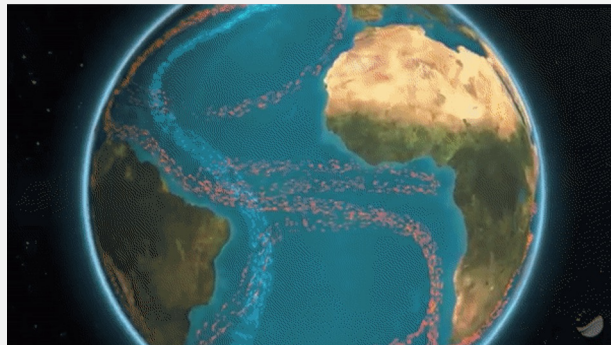
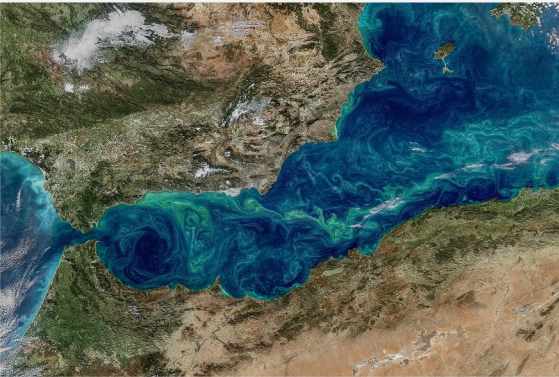


CNR
ISMAR
ISTITUTO
DI SCIENZE
MARINE

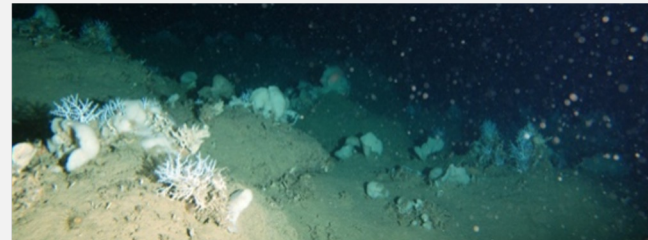
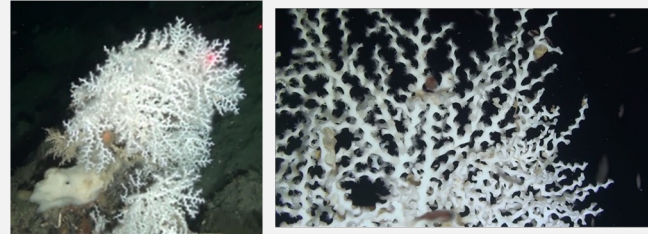


Marine ecologists, biologists, geologists, geophysicists, geochemists and oceanographers studying past and present dynamics of the ocean and the ocean-atmosphere interface

Influence of climate change on oceanic circulation, seawater chemistry, biogeochemical cycles



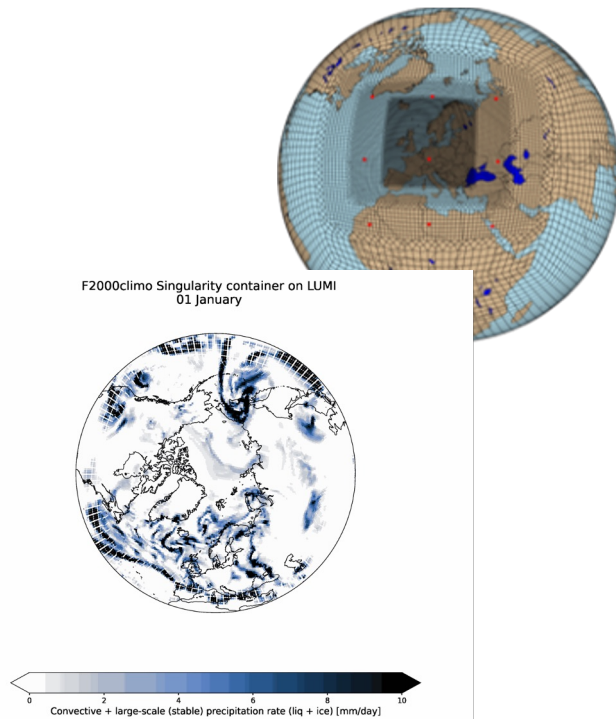
Marine ecosystems and habitats and their ecology



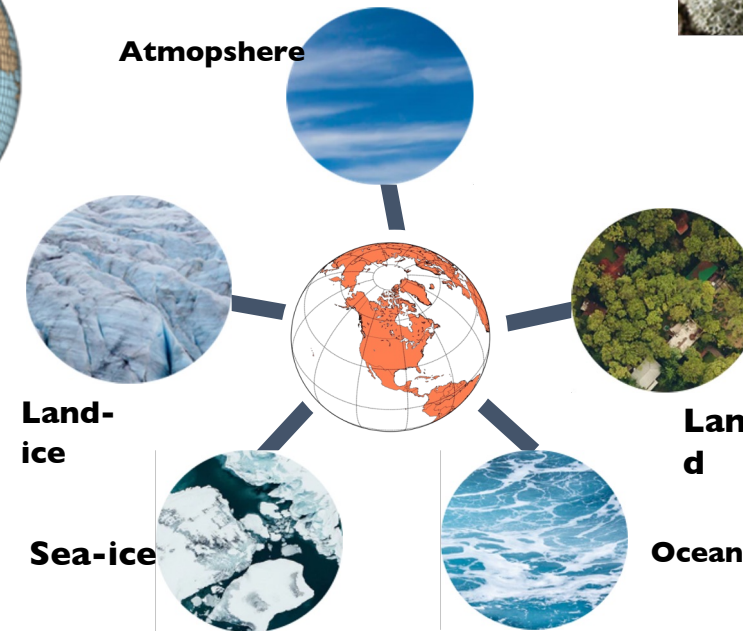
Natural and anthropogenic factors impacting economically and socially on coastal systems and deep-sea environments



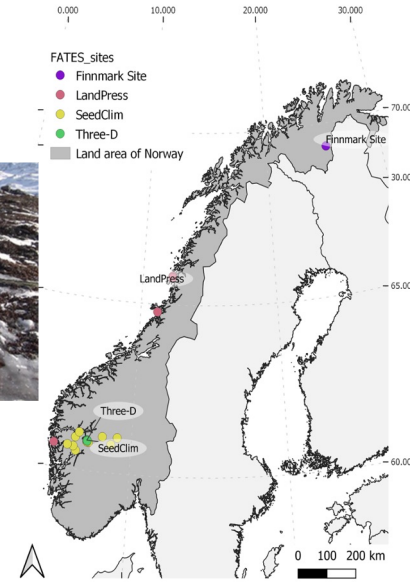
Climate Change Community



Earth System
Modelling



In-situ observations



Impact studies, climate mitigation and
adaptation, geo-engineering, monitoring

Multi-disciplinary case study: De-Impacts on Coastal Environment during the COVID 19 lockdown

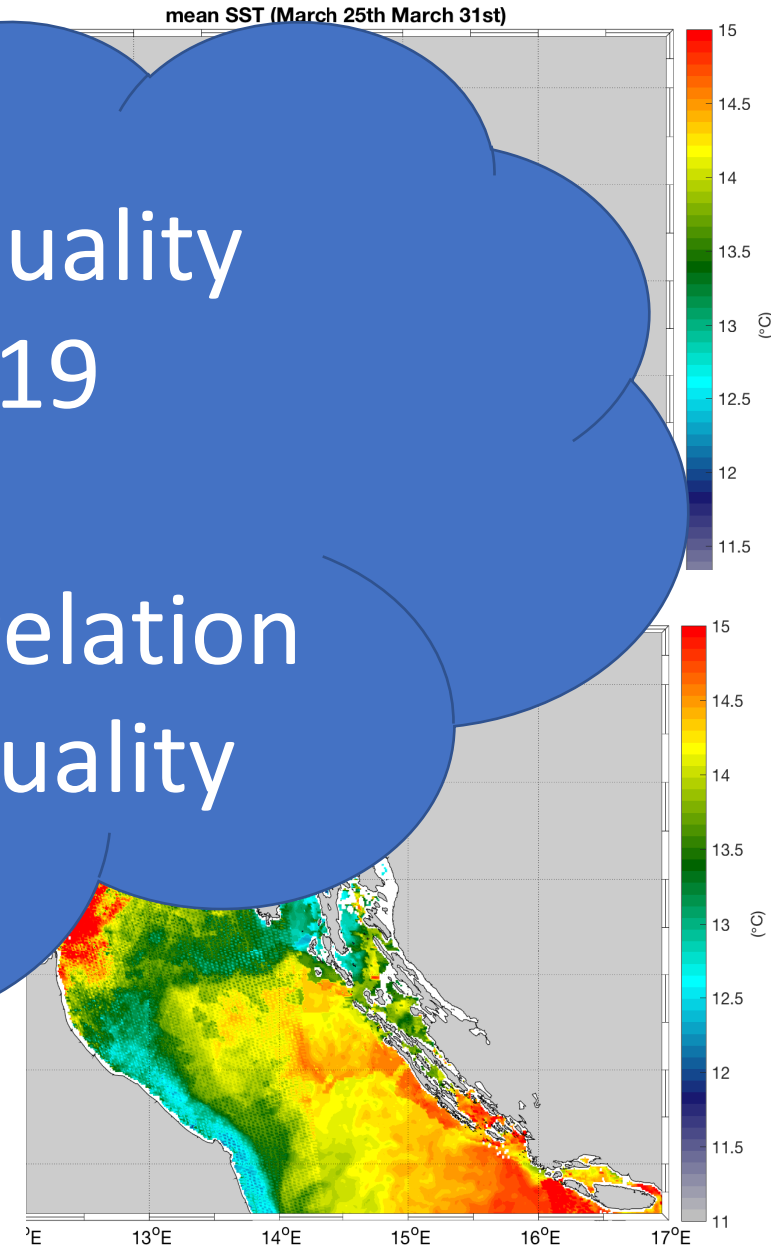
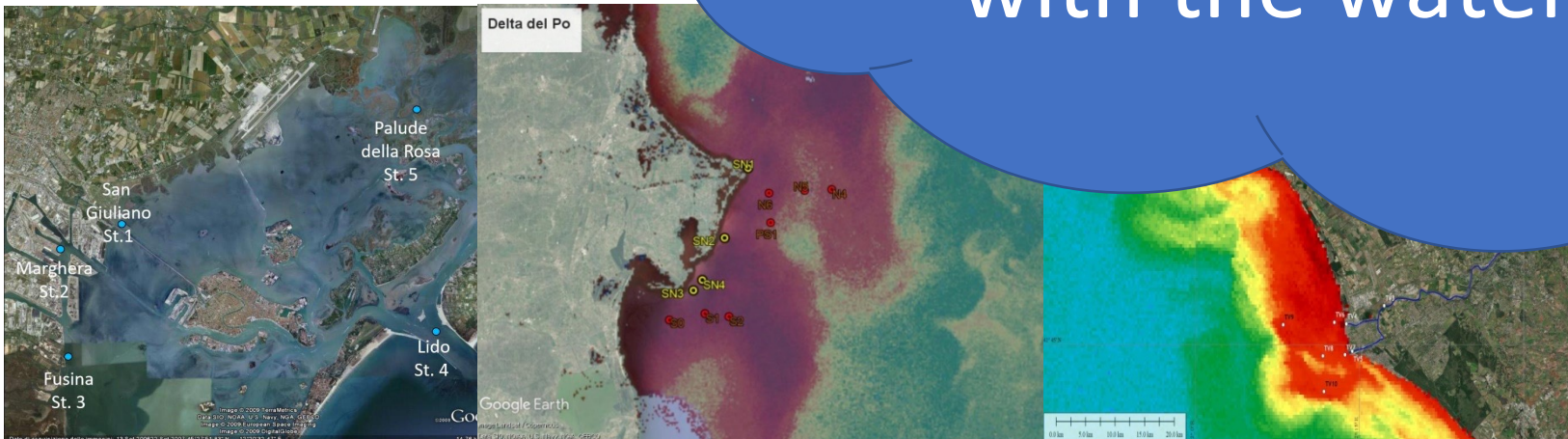
- To test the evolution of the anthropic coastal system following the lockdown with high urban and/or industrial areas
- To quantify in a synoptic way the sea (GES) at the end of applying open data approach
- To integrate measures from adding (i) *ad hoc* measures in maximum change, (ii) quality citizens according to the Lo

What about air quality

During Covid 19

Lockdown?

Are there any correlation with the water quality





*Research Lifecycle Management technologies for
Earth Science Communities and Copernicus users in EOSC*

**how reliance services can help to connect
the two communities and to answer this
scientific question?**

DEMO

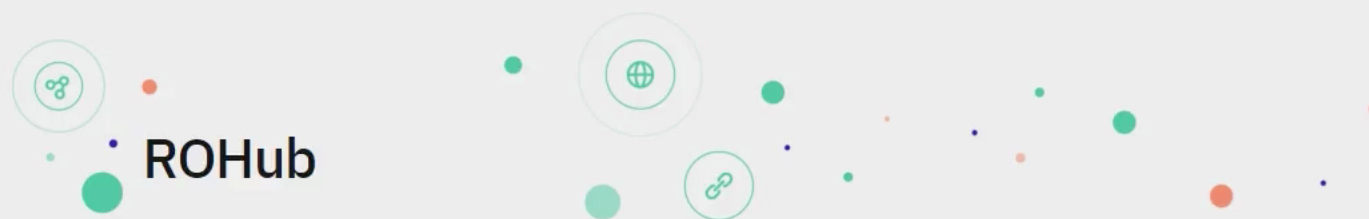


This project has received funding from the European research infrastructures
(including e-Infrastructures) under the European Union's Horizon 2020 research
and innovation programme under grant agreement No 101017501

individually, but of the whole research lifecycle as a first-class citizen.

Based on 3 complementary technologies

Reliance proposes a research lifecycle management service ecosystem based on three complementary and interconnected technologies:



ROHub is a holistic solution for the storage, lifecycle management and preservation of scientific investigations, campaigns and operational processes via research objects.

It makes these resources available to others, allows to publish and release them through a DOI, and allows to discover and reuse pre-existing scientific knowledge. Built entirely around the research object concept and inspired by sustainable software management principles, ROHub is the reference platform implementing natively the full research object model and paradigm, which provides the backbone



*Research Lifecycle Management technologies for
Earth Science Communities and Copernicus users in EOSC*

Thanks!

Federica Foglini
federica.foglini@cnr.it



This project has received funding from the European research infrastructures (including e-Infrastructures) under the European Union's Horizon 2020 research and innovation programme under grant agreement No 101017501